

DISTRICT SURVEY REPORT FOR SAND MINING/SAND GHATS DISTRICT DUMKA AS PER SUSTAINABLE MINING GUIDE LINES.



**MEMBERS OF THE DISTRICT SURVEY REPORT
COMMITTEE FOR SAND MINING/SAND GHATS
DISTRICT DUMKA AS PER SUSTAINABLE
MINING GUIDE LINES**


29/10/17

**Geologist
District Geological Office
Dumka**


12/10/17

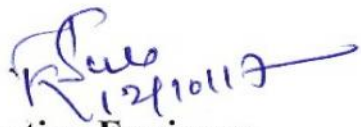
**Assistant Director Geologist
District Geological Office
Dumka**


11/10/17

**District Mining Officer,
Dumka**


12/11/17

**Executive Engineer
Irrigation Department
Dumka**


12/10/17

**Executive Engineer
Minor Irrigation Department
Dumka**


12/10/17

**Divisional Forest Officer,
Dumka.**


12/11/17

**Deputy Commissioner
Dumka.**

PREFACE

In Compliance to the letter No. 1874/CS dated 01.08.2017, issued by the Chief Secretary to Government, Government of Jharkhand and notification No. Kha.Ni.(Vivid)—67/2017, 1905 dated 16.08.2017 issued by the secretary of Government, Department of Industries, Mines and Geology Government of Jharkhand. The preparation of District survey report of River bed mining and other minor minerals is in accordance appendix 10 of the notification. It is also mentioned here that the procedure of preparation of District Survey Report is as per notification guidelines. Every efforts have been made to cover sand mining locations, areas & overview of Mining activity in the district with all it's relevant features pertaining to geology & mineral wealth in replenishable and non-replenishable areas of rivers, stream and other sand sources. This report will be a model and guiding document which is a compendium of available mineral resources, geographical set up, environmental and ecological set up of the District and is based on data of various departments, published reports, and websites. The data may vary due to flood, heavy rains and other natural calamities.

SURVEY REPORT OF DISTRICT DUMKA

In reference to the letter No. 1874/CS dated 01.08.2017, issued by the Chief Secretary to Government, Government of Jharkhand and notification No. Kha.Ni.(Vivid)—67/2017, 1905 dated 16.08.2017 issued by the secretary of Government, Department of Industries, Mines and Geology Government of Jharkhand a Survey shall be carried out by the District Environment Impact Assessment Authority (DEIAA) with assistance of irrigation department (Minor), Forest department, Mining department and Geology department in the district for preparation of District Survey Report as per the sustainable Sand mining guidelines to ensure identification of areas of aggradations or deposition where mining can be allowed; and identification of areas of erosion and proximity to infrastructural structures and installations where mining should be prohibited and calculation of annual rate of replenishment and allowing time for replenishment after mining in that area. Every efforts have been made to cover sand mining locations, areas & overview of Mining activity in the district with all it's relevant features pertaining to geology & mineral wealth in replenish-able and non-replenish-able areas of rivers, stream and other sand sources. The mineral potential is calculated based on field investigation & geology of the catchment area of the river or streams. Also as per the site conditions and locations, depth of minable mineral is defined. The area for removal of the mineral in a river or stream is decided depending on geomorphology & other factors, it can be 50% to 60% of the area of a particular river or stream. Other constituents like clay and silt are excluded as waste while calculating the mineral potential of particular river or stream.

Introduction:

Dumka District, an administrative district of Jharkhand has its headquarter at Dumka. It was separated from Santhal Pargana on 10.06.1983 when Deoghar, Sahibganj and Godda were upgraded as new Districts. After formation of new Jharkhand State,

Dumka District was further divided and Jamtara Sub-Division was upgraded as a separate District. The district lies between 23°45' to 24°38' (North) Latitude and 86°20' to 87°07' 5" (East) Longitude. The district is situated in the Northern Plain of India and eastern plateau and hill region. The Dumka District is surrounded by Sahibganj, Godda and Banka of Bihar in the north, by Pakur (Jharkhand) and Birbhum (West Bengal) in the east, by Jamtara (Jharkhand) and Burdwan (West Bengal) in the south and by Deoghar in the west. The total geographical area of the district is about

3716.2 Sq. km. Dumka District have many popular temples like Basukinath, Sirshanath, Maruti Mandir and Dharamsthana. Baba Basukinath & Baba Sumeshwarnath is famous temple of Lord Shiva. In the month of Shravan lacs & lacs of people from different parts of country as well as people of several country come to Basukinath to worship Lord Shiva. Also on the eve of Mahashivratri the people of different parts of the district come to Sumeshwarnath to worship Lord Shiva. Naag Mandir also a famous temple of Lord Shiva is situated at the top of a hill of Shiv Pahar at Dumka. Besides of above Masanjore Dam, Tatloi, Water Park, Shrishti Hill Park and Malooti are the famous tourist place in Dumka district having beautiful, attractive & greenish natural atmosphere. Malooti is a historical and religious place which is situated in Sikaripara Block on Dumka -Rampur hat interstate highway at a distance of 55 K.M. from district headquarter Dumka. In 1860 Malooti was made tax-free capital by the then king Basant Rai alias Bsant. Malooti is also associated with the archaeological and religious important place for natural beauty. Dumka is the sub-capital of Jharkhand state.

1. Overview of Mining Activity in the District:

Dumka District is having a large number of stone mines and crushers. Approximately 87 mines & 263 crushers are in operation with the support of 25 Thousand labour force in present time. The stone industry is paying 1 crore rupees per year as royalty to the Govt. in addition to commercial taxes. The quality of Dumka black stone chips is excellent for constructional purpose. Though, Dumka is not rich in minerals. However, a number of economic minerals occur here and there and are being worked out. Among the minerals found are coal, fireclay, and silica sand.

2. List of Sand Mining Leases in the District with location, area and period of validity

Sl. No	Location (Panchyat)	Area in Hec	Period of validity
1	Bartaly	0.728	
2	Banderjori	22.720	
3	Sarwa	20.502	
4	Haripur	13.800	
5	Sarsabad	18.089	
6	Palasi	21.084	
7	Bara	15.087	
8	Dalahi	9.025	
9	Ranga	11.190	
10	Govindpur	196.480	
11	Sukjora	11.291	
12	Patra	5.423	
13	Dekchaghonga	5.940	The agreement has been cancelled DC order dated 11.08.2017
14	Kusmaha	1.093	
15	Haripur	10.562	
16	Petsar	8.154	
17	Khadukadma	7.074	
18	Bankijor	3.217	
19	Kalajhar	4.128	
20	Kuschira	29.461	

3. Details of Royalty or revenue receipt in last three years

Sl.No	Year	Royalty (in lakhs)
1	2015-16	348.56
2	2016-17	48.09
3	2017-18	0

4. Details of Production of Sand or Bajari or Minor Mineral in last three years.

Sl.No	Year	Sand (in Million Tonne)
1	2015-16	-
2	2016-17	
3	2017-18	

5. PROCESS OF DEPOSITION OF SEDIMENTS IN THE RIVERS OF THE DISTRICT:-

The deposition in a river bed is more pronounced during rainy season although the quantum of deposition varies from stream to stream depending upon numbers of factors such as catchment, lithology, discharge, river profile and geomorphology of the river course. where annual deposition is one meters, but it is noticed that during flood season whole of the pit so excavated is completely filled up and as such the excavated area is replenished with new harvest of minerals.

In order to calculate the mineral deposits in the stream beds, the mineral constituents have been categorized as clay, silt, sand, bajri and boulder. However during present calculation, the waste material i,e silt which vary from 10 to 20% in different streams has also been included in the total production. Further the Survey of India Topo-Sheets are used as base map to know the extent of river course. The mineral reserves have been calculated only upto 1.00 meter depth although there are some portions in the river beds such as channel bars, point bars and central islands where the annual deposition is raising the level of river bed thus causing shifting of the rivers towards banks resulting in to cutting of banks and at such locations, removal of this material upto the bed level is essential to control the river flow in its central part to check the bank cutting. While calculating the mineral potentials, the mineral deposits lying in the sub-tributaries of that particular stream/river has not been taken into consideration. Since these mineral deposits are adding annually.

6. General Profile of the District

Dumka district ranks eleventh in terms of total population in the state and nineteenth in regard to decadal population growth rate (2001-11) among the twenty four districts. With a sex ratio of 977, it ranks seventh in the state. The district comprises of ten blocks, namely, Saraiyahat, Jarmundi, Ramgarh, Gopikandar, Kathikund, Shikaripara, Ranishwar, Dumka, Jama and Masalia. As per Census 2011, the district has 2688 villages and 5 towns distributed in four assembly constituencies. Census 2011 figures indicated that the percentage share of scheduled caste population to total population was 0.62 percent, while that of scheduled tribes was 43.22 percent. Based on the number of total rural households in Census 2011 and BPL Revision Survey of 2010-11, the percentage of BPL households in rural areas is 56.86 percent.

BLOCKS AT A GLANCE							
INDICATOR SUB DISTRICT	POPULATION	MALE	FEMALE	CHILD POPULATION	SEX RATIO	CHILD SEX RATIO	LITERACY RATE (7 & ABOVE) (%)
Saraiyahat	156291	80535	75756	27416	941	943	58.65
Jarmundi	185286	94202	91084	32674	967	952	59.04
Ramgarh	159911	79944	79967	26694	1000	991	55.45
Gopikandar	42063	20999	21064	7686	1003	981	50.12
Kathikund	71458	35598	35860	12841	1007	983	54.08
Shikaripara	131464	65723	65741	22931	1000	968	57.10
Ranishwar	101667	51115	50552	15478	989	973	60.06
Dumka	210785	107949	102836	30568	953	957	74.73
Jama	137963	69621	68342	23015	982	981	61.88
Masalia	124554	62828	61726	20146	982	956	61.66
Source : Census of India, 2011							

7. Land Utilization Pattern in the district: Forest, Agriculture, Horticulture, Mining etc.

Sl. No.	Name of District	Geographical Area	Forest Area	Land Put to Non-Agricultural Use	Barren & Utilised land	Permanent Posture & Other Grazing Land	Cultivable Waste Land	Land Under Miscellaneous Trees
1	2	3	4	5	6	7	8	9
1	DUMKA	379.03	42.71	41.99	24.00	18.59	22.72	8.17

8. Physiography of the District

Topographically the district is an upland tract with a hilly backbone running from north to south. A narrow but long strip of alluvial soil which is between the Ganga and Rajmahal hills, flank the north east side. There are several hill ranges like Rajmahal hill, Ramgarh hill, Lagwa hills with several small hillocks. The average elevation of the hill ranges between 150 to 300 meters.

The landscape of the district is to a large extent comprises of long undulation ridges forming rugged and coarsely dissected topography between which runs the drainage channels. The trough in between the undulations is full of rich alluvial soil. Geomorphologic ally the district can broadly be divided into three well defined, physically identifiable and genetically significant units:

- (i) the hilly area
- (ii) the rolling country or (Valleys) and
- (iii) the pediplained flat country.

9. **Rainfall Data**

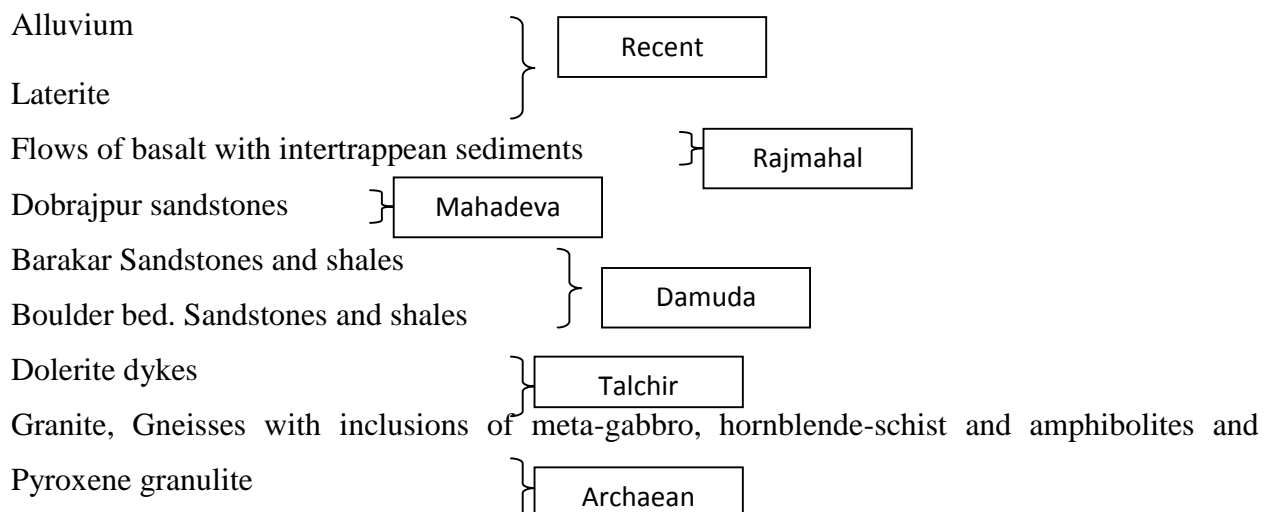
The district receives a larger share of the annual rainfall mainly by the south – west monsoon during inter-monsoon period which originates in the Bay of Bengal. The district receives 60% of the annual rainfall during monsoon period. July is the month which receives the highest rainfall. The average annual rainfall for the district is 1391.40 mm. The normal annual rainfall of the district is 1422.5 mm with normal monsoon rain fall of 1125.6mm. During the year 2008 the annual rainfall was 1336 mm and monsoon rainfall was 1223.2 mm which was 91.3 % of the annual rainfall.

10. Geology and Mineral wealth

Rajmahal Trap is the major rock type in the district. The other geological formations of the district are alluvium, Laterite and Gondwana. In the eastern part of the district, recent alluvium occurs in patches, which is mainly composed of sand and sub ordinate clay. Laterites are mainly of in situ origin and have been formed by sub-aerial erosion of underlying basalts under favorable climatic conditions. Laterites provide good porous and permeable nature. The most significant Barakar coal measures of Gondwana formation occurs in western part of the district. The different units of the lava flows are the main water bearing horizons in basaltic formation. The massive basaltic unit is hard and compact in nature with negligible primary porosity and permeability. But the process of weathering and structural deformations, development of secondary porosity such as joints and fractures.

The Lower Gondwana rocks inclusive of coal bearing Barakar formation in Rajmahal Groups of coal fields generally form subdued topography along main river valleys like Bansloi, Gumra, and Brahmani etc. Its southern margin with the Brahmani basin is concealed by younger units comprising Dubrajpur Formation and Rajmahal formation. The western boundary is Precambrian basement on the west of juxtaposed against the Lower Gondwanas. The central part is covered by younger formations like Dubrajpur and Rajmahal formation standing out as plateau type hills.

Geological Succession of Dumka



11. Drainage system with description of main rivers

Sl.No	Name of the River	Area drained (Sq.Km)	% area drained in the District
1	Tepra river	3.75	0.100
2	Tripita river	2.42	0.064
3	Nunbil river	3.37	0.090
4	Sidhidari river	1.46	0.039
5	Motihari river	2.68	0.071
6	Mayurakshi river	4.34	0.115
7	Hardia river	0.35	0.009
8	Jamuna river	0.44	0.012
9	Dwarka river	0.91	0.024
10	Gumra river	1.46	0.039
11	Dhobai river	1.23	0.033
12	Brahmani river	5.67	0.151
13	Bhurbhuri river	1.88	0.050
14	Bhamri river	0.62	0.016
15	Banshloi river	8.19	0.218

12. Salient features of the important rivers and streams

Sl.No	Name of River/stream	Total length in District (Km)	Place of origin	Altitude at origin (in meter)
1	Tepra river	41.59		
2	Tripita river	10.71		
3	Nunbil river	43.07		
4	Sidhidari river	11.81		
5	Motihari river	46.70		
6	Mayurakshi river	55.09	Balthar (Deoghar)	
7	Hardia river	9.81		
8	Jamuna river	7.02		
9	Dwarka river	28.31		
10	Gumra river	22.35		
11	Dhobai river	23.01		
12	Brahmani river	50.00		
13	Bhurbhuri river	21.46		
14	Bhamri river	11.49		
15	Banshloi river	40.37		

13. The Mayurakshi :

The combined streams of Matihari, Dhobbi, Pussaro, all originating from the uplands of Santal Parganas in Jharkhand form the origin of the river Mayurakshi or Mor. Before entering Birbhum district in West Bengal, it is fed by the combined streams of Siddheswari and Noonbeel. After entering West Bengal, it is again joined by the river Khuskarni from the right and the rivulet Ghoshbera from the left, it leaves the boundary of the district and meets the river Dwarka at Talgram in Murshidabad district, the combined stream outfalls into river Bhagirathi.. Many “bils” and tanks are found in the Murshidabad district. In the north, an area of about 389 sq. kms. form a strip of low-lying country, which becomes a vast lake in the rains, village sites looking like islands. In the south, there is a plain of 129 sq. kms. at the confluence of the Mor and the Dwaraka, known as “hijal”. The Mayurakshi enters Birbhum from the Santhal Parganas (now in Jharkhand) and flows through the centre of the district from west to east, passing two miles north of Suri and forming the southern boundary of Rampurhat subdivision. It leaves the district and joins the Dwaraka, which itself is a tributary of the Bhagirathi. All the distributaries of the Mayurakshi take off from the left bank. In the eastern portion of its course it gives off distributaries known as Kana and Manikarnika Nalas. The Hingla enters Birbhum district from the Santhal Parganas and gradually approaches the river Ajay. The river unites with the river Ajay at Chapla in Dubrajpur then. The Bakreswar rises at the hot springs of the same name west of Suri, and after following a zig zag course eastwards, and receiving one by one the waters of almost all the rivulets of South Birbhum, joins the Mayurakshi beyond the eastern boundary of the district. The Brahmani a river enters the district at Narayanpur bisects the Rampurhat subdivision and passing under the railway two miles south of Nalhati falls into the Dwaraka in the Murshidabad district. The tributaries of the Mayurakshi are Bakreswar, Kopai, Dwarka and Brahmani.

14. The Brahmani :

The river river Brahmani originates from hills of Santal Pargana, enters Birbhum at Narayanpur and ultimately outfalls into river Dwarka at Sankoghat .

15. List of Settled Sand Ghats

Sl. No	River or stream	Portion of the river or stream recommended for mineral concession	Length of area recommended for mineral concession (in Kilometer)	Average width of area recommended for mineral concession (in meters)	Area recommended for mineral concession (in square meter)	Mineable mineral potential (in metric tone) (60% of total mineral potential)
1	Tepra river	Kusmaha	3	120	360000	486000
2	Tripita river	-	-	-	-	-
3	Nunbil river	Dalahi	14	80	1120000	1512000
4	Sidhidari river	-	-	-	-	-
5	Motihari river	-	-	-	-	-
6	Mayurakshi river	Raneswar to Dudhani	25	180	4500000	6075000
7	Hardia river	-	-	-	-	-
8	Jamuna river	-	-	-	-	-
9	Dwarka river	-	-	-	-	-
10	Gumra river	-	-	-	-	-
11	Dhobai river	-	-	-	-	-
12	Brahmani river	Amgachi	12	110	1320000	1782000
13	Bhurbhuri river	-	-	-	-	-
14	Bhamri river	-	-	-	-	-
15	Banshloi river	Kuschira	2	120	240000	324000
Total					7540000	10179000

16. Mineral Potential for Settled Sand Ghats

Boulder (MT)	Bajrai (MT)	Sand (Metric Tonne)	Total Mineable Mineral Potential(Metric Tonne)
NIL	NIL	10179000	10179000

Annual Deposition

Boulder (MT)	Bajrai (MT)	Sand (MT)	Total Mineable Mineral Potential(MT)
NIL	NIL	3053700	3053700

Sl. No	River or stream	Portion of the river or stream recommended for mineral concession	Length of area recommended for mineral concession (in Kilometer)	Average width of area recommended for mineral concession (in meters)	Area recommended for mineral concession (in square meter)	Mineable mineral potential (in metric tone) (60% of total mineral potential)
1	Mayurakshi river	Raneswar to Dudhani	25	180	4500000	6075000
2	Banshloi river	Kuschira	2	120	240000	324000
3	Brahmani river	Amgachi	12	110	1320000	1782000
4	Nunbil river	Dalahi	14	80	1120000	1512000
5	Tepra river	Kusmaha	3	120	360000	486000
Total			56		7540000	10179000

17. UnSettled Sand Ghats used for JSMDC

Sl. No	River or stream	Portion of the river or stream recommended for mineral concession (Mouza Name)	Length of area recommended for mineral concession (in meter)	Average width of area recommended for mineral concession (in meters)	Area recommended for mineral concession (in square meter)	Mineable mineral potential (in metric tone) (60% of total mineral potential)
1	Brahmani River	Rakhabani (vilai)	364	120	43680	58968
2	Brahmani River	Kajaladaha (Jhunki)	455	100	45500	61425
3	Mayuraxchi River	Sadipur	600	100	60000	81000
4	Mayuraxchi River	Bilkandi (Shilajori)	700	150	105000	141750
5	Motihara River	Dekchagonga Sand Ghat	1016	89	226060	305181
		Total	3135	559	480240	648324

Mineral Potential for Unsettled Sand Ghats

Boulder (MT)	Bajrai (MT)	Sand (Metric Tonne)	Total Mineable Mineral Potential(Metric Tonne)
NIL	NIL	648324	648324

Annual Deposition

Boulder (MT)	Bajrai (MT)	Sand (MT)	Total Mineable Mineral Potential(MT)
NIL	NIL	194497.2	194497.2

18. Guidelines and Methodology.

The Sustainable sand mining guidelines as per SEIAA Proceeding dated 07.05.13 and MoEF & CC Guidelines, 2016 have been followed where in following criteria were observed for delineation of new sand ghats, namely :-

- a) Should be at a distance of 10 Km from forest Sanctuary
- b) At a distance of 250m from the Reserve / Protected Forest
- c) At a distance of 10km from Interstate boundary
- d) At a distance of 500m from habitation, reservoir, archaeological monuments
- e) 15m distance from river bank or 1/5th of the total width of the river whichever is more
- f) For contiguous area, certification and availability of sand in less than 05 Hectare area.
- g) High Tension (33kb) transmission line not to pass above the sand ghats.
- h) The maximum mineable depth not to exceed 03m from river bed for quantification of sand.
- i) Natural building meanders to be preferred.

The present survey have been completed by observing the above guidelines and taking following considerations as directed in the State level Workshop held on 23.08.17.

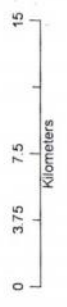
1. Survey of Unsettled sand ghats.
2. Identification of Stream orders for division in Category I and Category 2 streams.
3. Identification of sand ghats for Panchayats.
4. Identification of site for Stockyard.
5. Physical verification of settled ghats using Hand Held GPS.

DRAINAGE MAP (DRAINAGE ORDER)

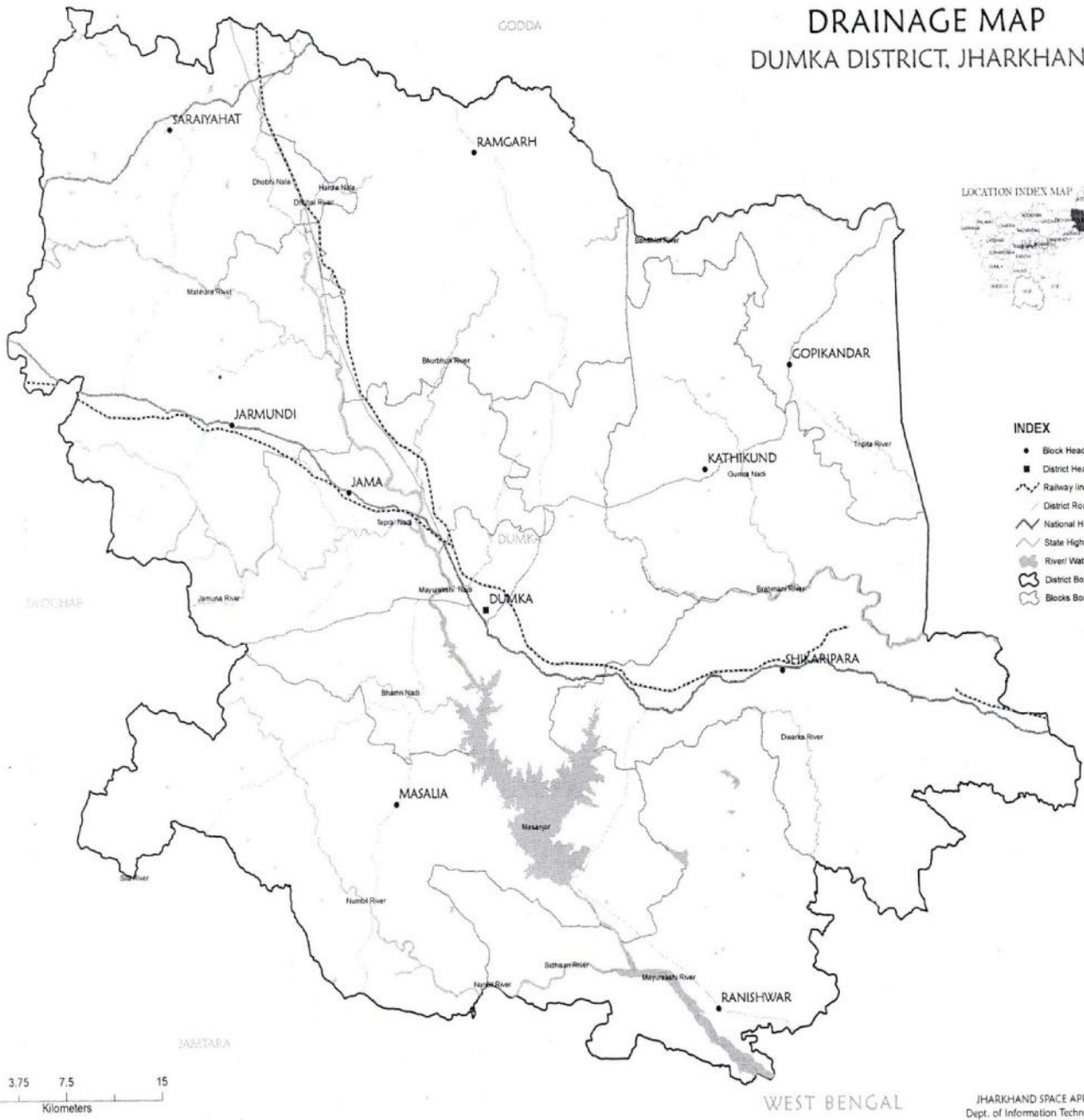
DUMKA DISTRICT, JHARKHAND



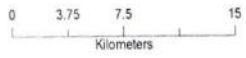
- INDEX**
- Block Headquarters
 - District Headquarters
- Stream/ River Order**
- 1st
 - 2nd
 - 3rd
 - 4th
 - 5th
 - 6th
 - 7th
 - 8th
- District Road
 - National Highway
 - State Highway
 - River/ Waterbody
 - District Boundary
 - Blocks Boundary



DRAINAGE MAP DUMKA DISTRICT, JHARKHAND



- INDEX**
- Block Headquarters
 - District Headquarters
 - Railway line
 - District Road
 - National Highway
 - State Highway
 - River/ Waterbody
 - District Boundary
 - Blocks Boundary



JHARKHAND SPACE APPLICATIONS CENTER
Dept. of Information Technology & e-Governance
Govt. of Jharkhand

नदी किनारे बालू उठाव

क्र.सं.	अर्जितकर्ता का नाम	जिला	नदी का नाम, प्लॉट संख्या, खाला संख्या	क्षेत्रफल (वर्ग मी.)	उठाव तिथि	टिप्पणी
1	रुरल डवलपमेंट एण्ड मार्केटिंग प्रा० लि०, डायरेक्टर - श्री देव कुमार दुबे, पिता - श्री दिवाकर चन्द्र दुबे, ग्राम - न्यू बैंक कॉलोनी, पोस्ट+थाना - आदमपुर, जिला - भागलपुर, पिनकोड- 812001, फोन नं० - 9771438195	दुमका	बड़तली पंचायत में पड़नेवाले सभी बालू घाट, मौजा - मुर्गावनी, थाना नं० 32, प्लॉट संख्या पुराना 1231, 1352, 1465, एवं 1478, नया 2240/अंश,	0.728	05.10.15 से तीन वर्ष	एकरारनामा के पश्चात बालू उठाव चालू
2	मेसर्स सारण ऑल्लोहल प्रा० लि०, निदेशक - श्री योगेन्द्र तिवारी, पिता - श्री रामेश्वर तिवारी, ग्राम - गिलानपाड़ा, पोस्ट - दुमका, थाना - दुमका नगर, जिला - दुमका, पिन नं० - 814101, मो० - 9431156284	दुमका	मयुराक्षी नदी एवं बन्दरजोड़ी पंचायत में पड़नेवाले सभी बालू घाट, मौजा - हरणाकुण्डी थाना नं० - 33, खाता संख्या - 57, प्लॉट संख्या 820, मौजा - मोरटंगा, थाना नं० - 34, खाता संख्या - 63, प्लॉट संख्या 1069, मौजा - बदीया, थाना नं० - 01, खाता संख्या - 44, प्लॉट संख्या 749, 540, 570	22.720	01.06.16 से तीन वर्ष	बालू उठाव बंद
3	मेसर्स सारण ऑल्लोहल प्रा० लि०, निदेशक - श्री योगेन्द्र तिवारी, पिता - श्री रामेश्वर तिवारी, ग्राम - गिलानपाड़ा, पोस्ट - दुमका, थाना - दुमका नगर, जिला - दुमका, पिन नं० - 814101, मो० - 9431156284	दुमका	मयुराक्षी नदी एवं सरुवा पंचायत में पड़नेवाले सभी बालू घाट, मौजा - सरुवा, थाना नं० - 25, खाता संख्या - 60, प्लॉट संख्या 1, 88, मौजा - विजयपुर, थाना नं० - 27, खाता संख्या - 47, प्लॉट संख्या 152/1348, 1152, 1, मौजा - करमटोला, थाना नं० - 29, खाता संख्या - 11, प्लॉट संख्या 91, मौजा- हिजला, थाना नं० - 32, खाता संख्या - 25, प्लॉट संख्या 1/713	20.502	04.09.15 से तीन वर्ष	एकरारनामा के पश्चात बालू उठाव चालू
4	श्री परमवीर मिश्रा, पिता - स्व० मोहन चन्द्र मिश्रा, ग्राम+पोस्ट+थाना+जिला - दुमका। पिन नं० - 814101, मो० नं० - 9334091854	दुमका	मयुराक्षी नदी एवं हरिपुर पंचायत में पड़नेवाले सभी बालू घाट, मौजा - बाबूपूर थाना नं० - 04, खाता संख्या - 41, प्लॉट संख्या 522/अंश, मौजा - हरिपुर, थाना नं० - 23, खाता संख्या - 40, प्लॉट संख्या 72/अंश, मौजा- सियारडंगाल, थाना नं० - 24, खाता संख्या - 24, प्लॉट संख्या 102/अंश,	13.800	07.09.15 से तीन वर्ष	एकरारनामा के पश्चात बालू उठाव चालू
5	श्री परमेश्वर कापरी, पिता - श्री फलानन्द कापरी, ग्राम - सरसाबाद, पोस्ट - महारो, थाना - जामा, जिला - दुमका। पिन नं० - 814101 मो० - 8969888030	जामा	मयुराक्षी नदी एवं सरसाबाद पंचायत में पड़नेवाले सभी बालू घाट, मौजा - मांगूरडीह थाना नं० - 43, खाता संख्या - 37, प्लॉट संख्या 1/अंश, 246/अंश, 247/अंश, मौजा - लकड़ापहाड़ी, थाना नं० - 27, खाता संख्या - 68, प्लॉट संख्या 147/अंश, मौजा - मुड़माला, थाना नं० - 44, खाता संख्या - 26, प्लॉट संख्या 274/अंश, मौजा - सरसाबाद, थाना नं० - 29, खाता संख्या - 105, प्लॉट संख्या 2135/अंश	18.089	07.09.15 से तीन वर्ष	एकरारनामा के पश्चात बालू उठाव चालू

6	विन्दवासिनी कॉमर्सियल सर्विस प्रा0लि0,निदेशक – श्री तेज प्रताप सिंह,पिता – श्री शिव पुजन सिंह,ग्राम – धिरेन्द्रपुरम रानीबांध तालाबके निकट, धैया, कल्याणपुर, जिला – धनबाद, पिन नं0– 826004,	जामा	मयुराक्षी नदी एवं पलासी पंचायत में पड़नेवाले सभी बालू घाट, मौजा – गजन्डा, थाना नं0 – 34, खाता संख्या – 33, प्लॉट संख्या 510, मौजा – लकड़दिवानी, थाना नं0 – 35, खाता संख्या – 52, प्लॉट संख्या 792, मौजा – मकुनी, थाना नं0 – 37, खाता संख्या – 38, प्लॉट संख्या 236, 270, मौजा – मुरली चक, थाना नं0 – 38, खाता संख्या – 06, प्लॉट संख्या 1, 57, मौजा – दरवेचक, थाना नं0 – 40, खाता संख्या – 11, प्लॉट संख्या 241, 242, मौजा – कोरी कटनीया, थाना नं0 – 41, खाता संख्या – 21, प्लॉट संख्या 293, मौजा – कटनीया, थाना नं0 – 42, खाता संख्या – 23, प्लॉट संख्या 497, 503, 504, मौजा – मुसफा चक, थाना नं0 – 43, खाता संख्या – 29, प्लॉट संख्या 80, 538	21.084	28.09.15 से तीन वर्ष	एकरारनामा के पश्चात बालू उठाव चालू
7	श्री अर्जून प्रसाद गुप्ता, पिता – स्व0 गणपत साह, ग्राम – गादी देवली, पोस्ट – गोवारी, थाना – जामा, जिला – दुमका, मो0 नं0 – 9470125144	जामा	बारा पंचायत में पड़नेवाले सभी बालू घाट, मौजा – बारा थाना नं0 – 14, खाता संख्या – 200, प्लॉट संख्या 1318, 3824, मौजा – मेधी घटवाली, थाना नं0 – 15, खाता संख्या – 17, प्लॉट संख्या 870, मौजा – मेधी संधाली, थाना नं0 – 16, खाता संख्या – 26, प्लॉट संख्या 1, 431, 759, मौजा – सारो पहड़ी, थाना नं0 – 17, खाता संख्या – 33, प्लॉट संख्या 1, मौजा – फुलोपानी, थाना नं0 – 18, खाता संख्या – 42, प्लॉट संख्या 1, 437, 1222 मौजा – दुधानी, थाना नं0 – 19, खाता संख्या – 46, 1, मौजा – जामोगड़ी, थाना नं0 – 20, खाता संख्या – 43,	15.087	23.12.15 से तीन वर्ष	एकरारनामा के पश्चात बालू उठाव चालू
8	मेसर्स मैहर डेभलपर्स, पार्ट0 – श्री अनिल कुमार सिंह, पिता – श्री शालीग्राम सिंह, ग्राम – कुम्हारपाड़ा, पोस्ट – दुमका, थाना – दुमका नगर, जिला – दुमका, पिनकोड – 814101, मो0 – 08873953285	मसलिया	नूनबील नदी एवं दलाही पंचायत में पड़नेवाले सभी बालू घाट, मौजा – कालीपाथर, थाना नं0 – 11, खाता संख्या – 31, प्लॉट संख्या 852, 97, 98 मौजा – चूहादाहा, थाना नं0 – 15, खाता संख्या – 47, प्लॉट संख्या 1188 मौजा – बरियाबाद, थाना नं0 – 13, खाता संख्या – 27, प्लॉट संख्या 01, मौजा – दलदली, थाना नं0 – 24, खाता संख्या – 53, प्लॉट संख्या 121, 699, मौजा – बनबाद, थाना नं0 – 08, खाता संख्या – 20, प्लॉट संख्या 723, 401, 01	9.025	04.09.15 से तीन वर्ष	एकरारनामा के पश्चात बालू उठाव चालू
9	विन्दवासिनी कॉमर्सियल सर्विस प्रा0लि0, निदेशक – श्री तेज प्रताप सिंह, पिता – श्री शिव पुजन सिंह, ग्राम – धिरेन्द्रपुरम रानीबांध तालाब के निकट, धैया, कल्याणपुर, जिला – धनबाद, पिननं0– 826004,	मसलिया	नूनबील नदी एवं रांगा पंचायत में पड़नेवाले सभी बालू घाट, मौजा – गोयासोल, थाना नं0 – 09, खाता संख्या – 62, प्लॉट संख्या 1226 एवं 1373	11.190	28.09.15 से तीन वर्ष	एकरारनामा के पश्चात बालू उठाव चालू

10	विन्दवासिनी कॉमर्सियल सर्विस प्रा0लि0, निदेशक – श्री तेज प्रताप सिंह, पिता – श्री शिव पुजन सिंह, ग्राम – धिरेन्द्रपुरम रानीबांध तालाब के निकट, धैया, कल्याणपुर, जिला – धनबाद, पिन नं0– 826004,	रानेश्वर	मयुराक्षी नदी एवं गोविन्दपुर पंचायत में पड़नेवाले सभी बालू घाट, मौजा – बेनीग्राम, थाना नं0 25, प्लॉट संख्या 38, मौजा – हुसैनगंज, थाना नं0 26, खाता नं0 19, प्लॉट संख्या 137, मौजा – चकविरला,, थाना नं0 27, खाता नं0 06, प्लॉट संख्या 1, मौजा – हरजौड़ा, थाना नं0 28, खाता नं0 47, प्लॉट संख्या 830, मौजा – डुमरा, थाना नं0326, खाता नं0 67, प्लॉट संख्या 1, मौजा – महलपुर,, थाना नं0 38, खाता नं0 67, प्लॉट संख्या 1194, 44, मौजा – चापाकुली, , थाना नं0 39, खाता नं0 77, प्लॉट संख्या 677, मौजा – गौविन्दपुर, थाना नं0 40/34,, खाता नं0 191, प्लॉट संख्या 1655, 1656, मौजा – आमजौड़ा, थाना नं0 43/12, खाता नं0 231, प्लॉट संख्या 1536, 412, 525, मौजा – दिगुली, थाना नं0 44, खाता नं0 114, प्लॉट संख्या 2,	196.480	पर्यावरणीय स्वीकृति लंबित रहने के कारण बालूघाट एकरारनामा नहीं हुआ है।	बालू उठाव बंद
11	श्री राजन प्रसाद, पिता – सकलदेव प्रसाद, पता – शास्त्रीनगर, पोस्ट+थाना – बैंक मोड़, जिला – धनबाद।	रानेश्वर	मयुराक्षी नदी एवं सुखजोड़ा पंचायत में पड़नेवाले सभी बालू घाट, मौजा – चमकदाहा, थाना नं0 17/21, खाता नं0 प्लॉट संख्या 2843, मौजा – एकतल्ला, थाना नं0 18, खाता नं0 210, प्लॉट संख्या 998, मौजा – नारगी,, थाना नं0 21/17, खाता नं0 218, प्लॉट संख्या 2875, 2874, मौजा – राखरी, थाना नं0 22 खाता नं0 24, प्लॉट संख्या 410, ,	11.291	पर्यावरणीय स्वीकृति लंबित रहने के कारण बालूघाट एकरारनामा नहीं हुआ है।	बालू उठाव बंद
12	मेसर्स स्वास्तिक ट्रेडर्स, पार्ट0 – श्री सुदीप कुमार दे, पिता – सुनील कुमार दे, ग्राम – दक्षिण नन्ना जाटिया, पोस्ट+थाना – बिजपुर, जिला – उत्तर 24 परगना, पिनकोड – 743136, मो0 – 9308980402	रानेश्वर	मयुराक्षी नदी एवं पाथरा पंचायत में पड़नेवाले सभी बालू घाट, मौजा – छोटाकाम्ती थाना नं0 – 15, खाता संख्या – 54, प्लॉट संख्या 291, मौजा – परिहारपुर, थाना नं0 – 16, खाता संख्या – 94, प्लॉट संख्या 942, मौजा – रानीग्राम, थाना नं0 – 13, खाता संख्या – 251, प्लॉट संख्या 1495, मौजा – पलासडंगाल, थाना नं0 – 14, खाता संख्या – 86, प्लॉट संख्या 595,	5.423	07.09.15 से तीन वर्ष	एकरारनामा के पश्चात बालू उठाव चालू
13	रूरल डवलपमेंट एण्ड मार्केटिंग प्रा0 लि0, डायरेक्टर – श्री देव कुमार दुबे, पिता – श्री दिवाकर चन्द्र दुबे, ग्राम – न्यू बैंक कॉलोनी, पोस्ट+थाना – आदमपुर, जिला – भागलपुर, पिनकोड संख्या – 812001, फोन नं0 – 9771438195	जरमुण्डी	मोतिहारा नदी एवं ढेकचा घोंघा पंचायत में पड़नेवाले सभी बालू घाट, मौजा – घरटोपी, थाना नं0 – 11, खाता संख्या – —, प्लॉट संख्या 404, मौजा – झखिआ, थाना नं0 – 12, खाता संख्या – —, प्लॉट संख्या 1388, 1, 2, 468, 469, 1399 मौजा – बालाथर, थाना नं0 – 13, खाता संख्या – —, प्लॉट संख्या 641, मौजा – ढेकचाघोंघा, थाना नं0 – 36, खाता संख्या – —, प्लॉट संख्या 1, 112, 828, 829, 1512 मौजा – घोरमारा, थाना नं0 – 37, खाता संख्या – —, प्लॉट संख्या 98, 622	5.949	08.09.15 से तीन वर्ष	उपायुक्त, दुमका के आदेश दिनांक 11.08.17 के द्वारा बन्दोवस्ती रद्द कर दिया गया है।

14	मेसर्स सारण ऑल्लकोहल प्रा0 लि0, निदेशक - श्री योगेन्द्र तिवारी, पिता -श्री रामेश्वर तिवारी, ग्राम - गिलानपाड़ा, पोस्ट - दुमका, थाना - दुमका नगर, जिला - दुमका, पिन नं0 - 814101, मो0 - 9431156284	जरमुण्डी	टेपरा नदी एवं कुशमाहा पंचायत में पड़नेवाले सभी बालू घाट, मौजा - सिंघनी, थाना नं0 - 23, खाता संख्या - 34, प्लॉट संख्या 1252, मौजा - जोगधारा थाना नं0 - 03, खाता संख्या - 41, प्लॉट संख्या 290, 01, मौजा - कुशमाहा थाना नं0 - 04, खाता संख्या - 23, प्लॉट संख्या 610, 607	1.093	07.09.15 से तीन वर्ष	एकरारनामा के पश्चात बालू उठाव चालू
15	मेसर्स स्वास्तिक ट्रेडर्स, पार्ट0 - श्री सुदीप कुमार दे, पिता - सुनील कुमार दे, ग्राम - दक्षिण नन्ना जाटिया,पोस्ट+थाना - बिजपुर, जिला - उत्तर 24 परगना ,पिनकोड - 743136, मो0 - 9308980402	जरमुण्डी	टेपरा नदी एवं हरिपुर पंचायत में पड़नेवाले सभी बालू घाट, मौजा - लतापाकर, थाना नं0 - 41, खाता संख्या - 27, प्लॉट संख्या 407, 526, 527 मौजा - अम्बाडंगाल, थाना नं0 - 42, खाता संख्या - 23, प्लॉट संख्या 199 मौजा - लब्दा, थाना नं0 - 44, खाता संख्या - 30, प्लॉट संख्या 209, 284, मौजा - मोहनपुर, थाना नं0 - 45, खाता संख्या - 09, प्लॉट संख्या 01, मौजा - हरिपुर, थाना नं0 - 42, खाता संख्या - 43, प्लॉट संख्या 216, 217 मौजा - हरलाडंगाल, थाना नं0 - 48, खाता संख्या - 14, प्लॉट संख्या 95, 99, 106 मौजा - नूनामाटी, थाना नं0 - 49, खाता संख्या - 30, प्लॉट संख्या 336	10.562	04.09.15 से तीन वर्ष	एकरारनामा के पश्चात बालू उठाव चालू
16	मो0 सिद्धीक आलम, पिता - मो0 नेजाम उद्दीन, ग्राम+पोस्ट - खिरीबाँध, थाना - जगदीशपुर, जिला - भागलपुर पिनकोड - 812005 मो0 - 9801271961	जरमुण्डी	सुखजोरा नदी एवं पेटसार पंचायत में पड़नेवाले सभी बालू घाट, मौजा - बैगनथारा थाना नं0 - 40, खाता संख्या -, प्लॉट संख्या 342, मौजा - सुखजोरा, थाना नं0 - 37, खाता संख्या -, प्लॉट संख्या 647, 562, 565, 966 मौजा - कोरडीहा, थाना नं0 - 32, खाता संख्या -, प्लॉट संख्या 785, मौजा - करमकिता ताडनी, थाना नं0 - 31/34, खाता संख्या -, प्लॉट संख्या 281, 181, मौजा - असवारी, थाना नं0 - 30, खाता संख्या -, प्लॉट संख्या 948, मौजा - पेटसार, थाना नं0 - 41, खाता संख्या -, प्लॉट संख्या पुराना 1369, 1873, 1865, 624, नया 751, 742, 844	8.154	16.10.15 से तीन वर्ष	एकरारनामा के पश्चात बालू उठाव चालू
17	मेसर्स सारण ऑल्लकोहल प्रा0 लि0, निदेशक - श्री योगेन्द्र तिवारी, पिता -श्री रामेश्वर तिवारी, ग्राम - गिलानपाड़ा, पोस्ट - दुमका, थाना - दुमका नगर, जिला - दुमका, पिन नं0 - 814101, मो0 - 9431156284	शिकारीपाड़ा	ब्रम्हणी नदी एवं खाडूकदमा पंचायत में पड़नेवाले सभी बालू घाट, मौजा - खाडूकदमा थाना नं0 - 23, खाता संख्या - 80, प्लॉट संख्या 1, मौजा - भुगतानडीह थाना नं0 - 01, खाता संख्या - 41, प्लॉट संख्या 109, 110, 1953, 1954, 1955, 1956, 1957, 685	7.074	07.09.15 से तीन वर्ष	एकरारनामा के पश्चात बालू उठाव चालू

18	मेसर्स मैहर डेभलपर्स, पार्ट0 - श्री अनिल कुमार सिंह, पिता - श्री शालीग्राम सिंह, ग्राम - कुम्हारपाड़ा, पोस्ट - दुमका, थाना - दुमका नगर, जिला - दुमका। पिनकोड - 814101, मो0 - 08873953285	शिकारीपाड़ा	सरसाजोल नदी एवं बांकिजोर पंचायत में पड़नेवाले सभी बालू घाट, मौजा - सिधाचातर थाना नं0 - 10, खाता संख्या - 28, प्लॉट संख्या 1195, 1250 मौजा - लखनसारा थाना नं0 - 11, खाता संख्या - -, प्लॉट संख्या 322 मौजा - बांकिजोर, थाना नं0 - 06, खाता संख्या - 84, प्लॉट संख्या 1297, 2681, 2682, 2701	3.217	07.09.15 से तीन वर्ष	एकरारनामा के पश्चात बालू उठाव चालू
19	मेसर्स स्वास्तिक ट्रेडर्स, पार्ट0 - श्री सुदीप कुमार दे, पिता - सुनील कुमार दे, ग्राम - दक्षिण नन्ना जाटिया,पोस्ट+थाना - बिजपुर, जिला - उत्तर 24 परगना, पिनकोड - 743136, मो0 - 9308980402	काठीकुण्ड	आमगाछी गुमरो नदी एवं कालाझार पंचायत में पड़नेवाले सभी बालू घाट, मौजा - कालाझार थाना नं0 - 47, खाता संख्या - 35, प्लॉट संख्या 180, मौजा - शहरजोड़ी थाना नं0 - 48, खाता संख्या - 31, प्लॉट संख्या 18, 45 मौजा - मुड़भांगा, थाना नं0 - 52, खाता संख्या - 22, प्लॉट संख्या 746, 267, मौजा - दलदली, थाना नं0 - 53, खाता संख्या - 49, प्लॉट संख्या 395, 1388, 746, मौजा - आमगाछी, थाना नं0 - 55, खाता संख्या - 43, प्लॉट संख्या 229, मौजा - पोखरिया, थाना नं0 - 54, खाता संख्या - 30, प्लॉट संख्या 616, 618, 620	4.128	07.09.15 से तीन वर्ष	एकरारनामा के पश्चात बालू उठाव चालू
20	मेसर्स सारण ऑल्कोहल प्रा0 लि0, निदेशक - श्री योगेन्द्र तिवारी, पिता - श्री रामेश्वर तिवारी, ग्राम - गिलानपाड़ा, पोस्ट - दुमका, थाना - दुमका नगर, जिला - दुमका, पिन नं0 - 814101, मो0 - 9431156284	गोपीकान्दर	बासलोई नदी एवं कुश्चिरा पंचायत में पड़नेवाले सभी बालू घाट मौजा - धुनधापहाड़ी खाता नं0 39, प्लॉट संख्या 1, मौजा - कुश्चिरा, खाता संख्या 46, प्लॉट संख्या 931, 936,	29.461	पर्यावरणीय स्वीकृति लंबित रहने के कारण बालूघाट एकरारनामा नहीं हुआ है।	बालू उठाव बंद

दुमका जिला का वर्ष 2008 से दिसम्बर 2016 तक मासिक वर्षापात प्रतिवेदन

क्र.	वर्ष	जनवरी	फरवरी	मार्च	अप्रैल	मई	जून	जुलाई	अगस्त	सितम्बर	अक्टूबर	नवम्बर	दिसम्बर	वर्ष का योग
1	2	3	4	5	6	7	8	9	10	11	12	13	14	15
1	सामान्य वर्षपात	16.8	19.2	16.2	24.7	72.8	218.1	335.2	329.5	252.7	117.2	14.7	2.1	1419.2
2	2008	23.1	0.0	4.5	18.5	46.1	277.0	418.1	321.8	206.5	22.1	0.0	0.0	1337.7
3	2009	0.3	7.5	0.9	5.3	110.9	51.2	204.7	239.0	277.3	90.3	0.0	0.0	987.4
4	2010	0.0	0.0	0.0	0.0	36.0	133.0	223.7	200.3	197.0	73.4	2.1	0.5	866.0
5	2011	4.1	3.5	6.6	18.0	46.3	357.2	163.0	322.6	197.8	14.8	0.0	0.0	1133.9
6	2012	2.3	1.4	1.8	2.5	9.3	95.9	292.8	157.4	231.6	61.0	66.7	0.0	922.7
7	2013	0.0	15.2	2.5	23.6	123.8	166.1	137.9	263.3	138.4	203.2	0.0	0.0	1074.0
8	2014	0.6	19.6	8.5	7.6	92.8	138.5	296.3	173.0	153.3	21.7	0.0	0.0	911.9
9	2015	3.6	1.0	10.4	23.6	28.9	196.9	480.5	332.9	103.5	0.0	0.0	0.0	1181.3
10	2016	10.3	0.0	0.0	0.0	59.1	226.5	286.8	323.7	203.3	18.8	0.0	0.0	1128.5

वार्षिक वर्षापात

ज्ञापांक 130 / जि.सा. दुमका दिनांक 28-4-17
 प्रतिलिपि:- उपायुक्त, दुमका को सादर सूचनाार्थ समर्पित


 28/4/17
 जिला सांख्यिकी पदाधिकारी
 दुमका